

**City of Chicago Department of Public Health  
Epidemiology Program Report**

Demographic and Health Profile  
of the Chicago Asian Community

February 2005

## **Demographic and Health Profile of the Chicago Asian Community, 2000**

Shyam Misra, M.D., Ph.D.

Kirsti Bocskay, Ph.D., M.P.H.

Antigone Kouvelis, B.A.

Sandra Thomas, M.D., M.S.

### **Copyright Information**

All material appearing in this report is in the public domain and may be reproduced or copied without permission; citation as to source, however, is appreciated.

### **Suggested Citation**

Misra, S., Bocskay K., Kouvelis A., Thomas S. Demographic and Health Profile of the Chicago Asian Community 2000. Chicago, Illinois: Chicago Department of Public Health Epidemiology Program. 2005.

# Preface

The development of an Asian population database for Chicago is critical for research, policy decisions and for planning health interventions specific to the Asian community. In doing so, one of the Healthy People 2010 goals can be reached in Chicago by eliminating health disparities between different racial/ethnic communities. The Asian database will continue to evolve over time but this report provides a first glance at the composition of the Asian community in Chicago and vital health data including infant and adult mortality rates.

Thank you to Bill Paul, M.D., M.P.H. for his comments and suggestions. We hope this report is a useful resource for health professionals, community agencies and advocacy groups in providing direction for intervention and a baseline to measure progress. Questions and comments are welcome. Please contact:

Epidemiology Program  
Chicago Department of Public Health  
333 South State Street, Room 2137  
Chicago, Illinois 60604-3972  
(312) 747-9810  
E-mail: [PublicHealth@cdph.org](mailto:PublicHealth@cdph.org)

# Contents

Preface.....	I
Executive Summary.....	1
Introduction.....	3
Methods.....	5
Demographic Profile.....	8
Health Profile.....	13
References.....	17
Appendix.....	18

## List of Tables and Figures

Table 1. Distribution of U.S. population by racial/ethnic group (2000 U.S. Census).....	3
Table 2. Geographic distribution of Asia.....	4
Table 3. Cause of deaths and ICD-9/10 codes.....	6
Table 4. Population growth among racial/ethnic groups in Chicago.....	9
Table 5. Distribution of Chicago population by age and race/ethnicity.....	10
Table 6. Distribution of Asian population by age, gender, and each ethnic group alone.....	11
Table 7. Socioeconomic status of racial/ethnic groups in Chicago.....	12
Table 8. Birth rate among different racial/ethnic groups in Chicago (1990, 2000).....	13
Table 9. Age-adjusted all-cause and cause-specific mortality for mortality rates among different racial/ethnic groups in Chicago (1990,2000).....	15
Table 10. Distribution of Asian population by Chicago Community Area.....	18
Table 11. Distribution of Asian population by age, gender, and each ethnic group in combination with any other racial/ethnic group.....	21
Table 12. Distribution of Asian population by age, gender, and each ethnic group alone or in combination with any other racial/ethnic group.....	22
Figure 1. Distribution of the Chicago Asian population by community area.....	8
Figure 2. Distribution of Asian population in Chicago (2000).....	9
Figure 3. Trend in infant mortality rate (per 100,000 live births) among different racial/ethnic groups in Chicago (1990-2000).....	14
Figure 4. Deaths among different Asian populations over time.....	16

# Executive Summary

The Asian population in Chicago in 2000 was 125,974. This number represents an increase of 23,036 (22.4%) people from 1990 to 2000 while populations of Whites and Blacks/African-Americans decreased. The growth percent in the Asian community was approximately half that of Hispanic/Latino, American Indian and Alaska Native, and Native Hawaiian and Other Pacific Islander populations.

The Chinese population, alone and alone or in combination with any other racial/ethnic group, is the largest Asian community in Chicago, followed by Filipino and Asian Indian populations, respectively. Overall, the age structure of the Asian community in Chicago most resembles that of the White population. The largest proportion (23.6%) of the Asian population is between the ages of 20 and 29. The smallest number of Asians are 70 and older. Both males and females for all ethnic groups within the Asian community, except for the Japanese, follow the trend seen in the overall Asian and Chicago populations. In the Japanese population, the largest proportion of the community is in the 70 and over age category, and the smallest, the 0-9 age category.

More than 40% (43.2) of Asians made less than \$35,000, despite 30% of the population earning a Bachelors degree - the highest of any race/ethnicity in Chicago. However, the Asian community reported higher income levels than any other minority population in Chicago, and 81% had at least a high school diploma or GED.

Over 25% of Chicago's Asian community lives in three community areas: West Ridge (12.9%), Albany Park (8.15) and Uptown (6.1%). The Asian population is not evenly distributed by ethnicity among the community areas. For instance, the largest population of Chinese persons is located in Bridgeport while the largest population of Indians is in West Ridge.

The Asian birth rate in 1990 and 2000 was slightly less than for Chicago overall, and lower than those for Black/African-American and Hispanic/Latino populations. The birth rate fell for all racial/ethnic groups in Chicago from 1990 to 2000. However, birth rates for the Asian ethnic groups which were reported in both 1990 and 2000 (Chinese, Filipino, Japanese) rose anywhere from 50% to 200%, though the birth rate for Other Asians, the largest Asian category, decreased.

The Asian infant mortality rate has fluctuated over the 10 year period covered in this report, 1990-2000. A high of 10.7 per 1,000 was reached in 1993, and a low of 4.6 in 1997. However, it should be noted that because of the low number of deaths, the rate varies considerably due to chance alone. Despite this variability, infant mortality rates among Asians have consistently been less than overall rates for the city and the African-American population for 1990-2000, and overlapped with those in the White

and Hispanic populations in Chicago.

Overall mortality rates increased in the Asian & Pacific Islander community from 1990 to 2000. However, the mortality rate in Asians for 1990 and 2000 was lower than all other racial/ethnic groups and the overall Chicago population. There was a trend of increasing number of deaths over time among the Chinese, Japanese, Filipino and Korean populations from 1990 to 2000. This may be due to increases in population size over time, and not necessarily an increase in rates of death in these groups.

The cardiovascular disease mortality rate was the highest of all cause-specific rates in the Asian & Pacific Islander population, similar to other racial/ethnic groups in Chicago. However, rates of mortality due to cardiovascular disease were lower in Asians & Pacific Islanders compared to Whites and African-Americans, and were similar to those for Hispanics. The homicide mortality rate was the lowest of all cause-specific rates in the Asian & Pacific Islander population, and the lowest among all racial/ethnic groups in Chicago. Mortality rates increased for cerebrovascular disease, cancer and pneumonia and influenza from 1990 to 2000 in the Asian & Pacific Islander community. Mortality rates decreased for cardiovascular disease and diabetes, and remained stable for accidents, lower respiratory disease, and septicemia.

# Introduction

The United States has become more ethnically diverse. Asian-Americans now constitute the fourth largest racial/ethnic group and are one of the most rapidly growing minority populations, see Table 1. The Asian-American and Pacific Islander population, registered as 12.8 million (4.5 %) in 2000, is expected to reach 38 million (9%) by 2050 according to the U.S. Census Bureau<sup>1</sup>. Asian and Pacific Islanders 65 years and older is the fastest growing group and tripled between 1980 and 1995<sup>2</sup>. The city of

Table 1. Distribution of U.S. population by racial/ethnic group (U.S. Census Bureau 2000).

Race/Ethnicity	Number	Percent
White alone	211,460,626	75.1
Black/African-American alone	34,658,190	12.3
Hispanic/Latino alone	35,305,818	12.5
Asian alone	10,242,998	3.6
Asian Indian	1,678,765	0.6
Chinese (except Taiwanese)	2,314,537	0.8
Filipino	1,850,314	0.7
Japanese	796,700	0.3
Korean	1,076,872	0.4
Vietnamese	1,122,528	0.4
Other <sup>1</sup>	1,179,694	0.4
American Indian & Alaska Native alone	2,475,956	0.9
Native Hawaiian & Other Pacific Islander alone	398,835	0.1
Some other race alone	15,359,073	5.5
Two or more races	6,826,228	2.4
<b>Total Population</b>	<b>281,421,906</b>	<b>100</b>

<sup>1</sup>Other includes Bangladeshi, Cambodian, Hmong, Indonesian, Laotian, Malaysian, Pakistani, Sri Lankan, Taiwanese, Thai, Other Asian, and Other Asian, not specified.

Chicago has seen a similar trend in Asian population growth. Chicago reported a modest increase in its population size in the 1990's after almost two decades of population loss. This growth in population was due to an increase in the Asian and Hispanic populations. The decennial (1990-1999) growth rate in the Asian community was approximately 39%, and 38% in Hispanics, compared to declining White and African-American populations. There has been a shift in the demographic profile of the city, due to these disparate growth rates among different racial and ethnic groups, which is likely to continue in the future. The relatively small Asian community has become a significant component of the Chicago population, and therefore, a clear understanding of the socioeconomic and cultural factors that influence health and quality of life in this community is warranted.

The Asian community is a large heterogenous group owing to the size and diversity of the Asian continent, which is comprised of 48 countries divided into five major regions, see Table 2. However, the Federal Office of Management and Budget (OMB) defines Asian as any person having origins in any of the original peoples of the Far East, Southeast or Indian sub-continent<sup>3</sup>, highlighting the discrepancy between the geographic definition of Asian and that defined by the OMB. It is thought that the health needs of Asians may vary within the community itself because of the differential predictors of health which operate among them. This report will contribute to the existing body of knowledge on the Asian community in Chicago by detailing the demographic profile of different racial/ethnic groups, focusing on Asian sub-groups, by age, gender, education, income and community areas and determining the health status and disparity between different racial/ethnic groups.

Table 2. Geographic distribution of Asia.

Region	North	East	Southeast	South	Southwest
Country	Asian Russia Kazakhstan Kyrgyestan Tajikistan Turkmenistan Uzbekistan	China Japan Mongolia North Korea South Korea	Brunei Cambodia East Timor Indonesia Laos Malaysia Myanmar (Burma) Philippines Singapore Thailand Vietnam	Bangladesh Bhutan India Maldives Nepal Pakistan Sri Lanka	Afganistan Armenia Azarbaizan Bahrain Cyprus Georgia Iran Iraq Israel Jordan Kuwait Lebanon Oman Qatar Saudi Arabia Syria Turkey United Arab Emirates Yeman

# Methods

**Data Sources** The Chicago Department of Public Health (CDPH) has access to multiple data sources such as vital statistics, disease incidence, and the Behavioral Risk Factor Surveillance System (BRFSS), but all programs do not collect or report events by race/ethnicity, particularly with reference to the Asian community. This report has been compiled from data collected by CDPH, the Illinois Department of Public Health (IDPH) and the U.S. Census Bureau. CDPH Vital statistics used to determine the race/ethnicity-specific birth and death rates were extracted from computerized birth and death files available from IDPH . The demographic profile of the city of Chicago with regard to community area, age, gender, race/ethnicity, income, and education, with particular reference to the distribution of Asian ethnic groups, was extracted from U.S. Census data (1990, 2000).

**Analysis** U.S. Census data from 1990 and 2000 was used as the denominator for race/ethnicity-specific birth and mortality rates. The U.S. Census Bureau supplies the denominator for many more Asian sub-groups than Vital Records data from IDPH, which is limited to Asian Indian, Chinese, Filipino, Japanese, Korean and Vietnamese and Other Asian, as well as classifying Asian and Pacific islander together as a group. OMB definitions of race and ethnicity were used for all analyses, following the U.S. Census Bureau standard. U.S. Census data from 1990 was also used as the denominator to determine population growth percents. Key definitions have been included at the end of this chapter for clarity.

The race/ethnicity of a newborn has been classified the mother's race/ethnicity. The race/ethnicity of an infant on the birth certificate does not necessarily match with the race/ethnicity reported on the death certificate. Therefore, in the computation of race/ethnicity-specific infant mortality rate, the race/ethnicity of the mother was used. While computing rates, the race-specific denominator included individuals of that race alone or in combination with other races because the 2000 U.S. Census had the option of reporting one or more races in contrast to the 1990 U.S. Census and other databases such as the birth and death certificates which report only a single race.

Rates or percentages with less than 20 observations in the numerator are subject to large relative standard errors and wide confidence intervals, as such they were either clearly labeled as unstable or not reported.

## DEFINITIONS

### *Births*

The annual number of births and the birth rate, defined as the annual number of births in Chicago per 1,000 of the total population. For specific racial/ethnic groups, the birth rate is the annual number of births in Chicago of that particular racial/ethnic group per 1,000 of that particular racial/ethnic group's total population.

### *Infant Mortality*

The annual number and rate of deaths of resident infants (younger than one year of age). The rate is the number of infant deaths per 1,000 live births to mothers residing in Chicago. For specific racial/ethnic groups, the rate is the number of infant deaths of a particular racial/ethnic group per 1,000 live births to mothers of that same racial/ethnic group residing in Chicago.

### *Causes of Death*

The age-adjusted annual death rate per 100,000 population are given for each of the indicated causes of death (see ICD-9 and ICD-10 codes below). Note that the specific causes of death listed here are not exhaustive.

Table 3. Cause of deaths and ICD-9/10 codes.

Cause	ICD-9 codes	ICD-10 codes
Cardiovascular Disease	390-398, 402, 404-429	I00-I09, I11, I13, I20-I51
Cerebrovascular Disease	430-438	I60-I69
Cancer	140-208	C00-C97
Diabetes	250	E10-E14
Accidents	E800-E949	V01-X59, Y85-Y86
Lower Respiratory Disease	490-496	J40-J47
Septicemia	38	A40-A41
Homicide	E960-E969	X85-Y09, Y871, U01-U02
Pneumonia & Influenza	480-487	J10-J18

Rates for cause-specific and all-cause mortality (but not for birth events) are age-adjusted, which is explained in the following text.

### *Age Adjustment*

Age adjustment is a technique that is used to make it easier to interpret differences in disease rates between different populations. Most important health conditions vary with age. For instance, heart disease rates are much higher in people over age 65 than in people under age 25. Racial/ethnic populations can vary in their age composition. Similarly, racial/ethnic groups can vary in their age composition over time. When comparing rates of death between different racial/ethnic groups, or over time, we

would like to be able to separate what differences are potentially due to modifiable risk factors, and what differences are due to age. As such, age-specific rates were calculated using the direct method of standardization<sup>4</sup> to eliminate the confounding effect of age due to differential age structures among population groups. The projected 2000 U.S. population was used as the standard population to age adjust mortality data, which follows the recommendation and policy of the Department of Health and Human Services<sup>5</sup>.

The age-adjusted rate for a specific population is a weighted average of the age group specific rates for the population, using the weights derived from the standard population. The weight for a given age group is the proportion of the corresponding age-group in the standard population. For example, if 5-14 year olds represent 5% of the standard population, they are assigned a weight of .05. All of the weights add up to one. Age-adjusted rates that are derived using the same standard population can be compared to each other, but they CANNOT be compared to age-adjusted rates using different standard populations. Age-adjusted rates are *summary statistics for comparisons*, and NOT actual rates - they cannot be applied to a specific population to get the actual number of events that occurred in that population.

### ***Comparability Ratios***

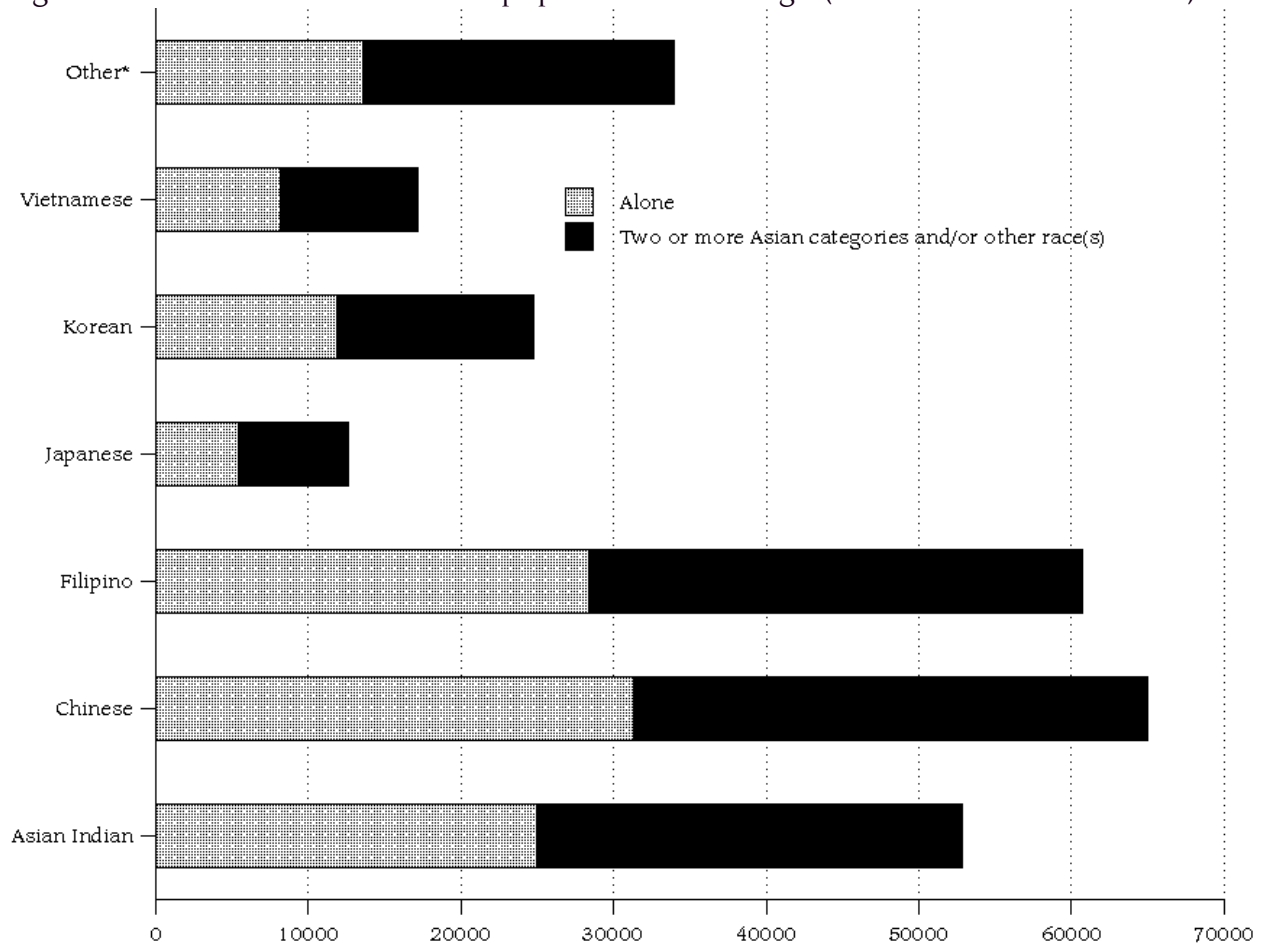
Cause-specific mortality rates were computed for 1990 and 2000 in order to determine changes in the leading causes of death over time. The implementation of the tenth revision of the International Classification of Disease (ICD-10) in 1999 influences classification and coding of cause of death, and thus affect rate and trend analyses. This effect was offset by multiplying the cause-specific death rates in the years 1990 to 1998 with the disease specific comparability ratio<sup>6</sup>.



Table 4. Population growth among racial/ethnic groups in Chicago (U.S. Census Bureau 1990,2000).

Race/Ethnicity	1990		2000		Growth Percent
	Number	Percent	Number	Percent	
White	1,236,524	44.4	1,215,315	42.0	-1.7
Black/African-American	1,087,711	39.1	1,065,009	36.8	-2.1
Hispanic/Latino	545,852	19.6	753,644	26.0	38.1
Asian	102,938	3.7	125,974	4.3	22.4
American Indian and Alaska Native	7,064	0.3	10,290	0.4	45.7
Native Hawaiian and Other Pacific Islander	1,180	0.04	1,788	0.1	51.5
Some other race	321,309	11.5	393,203	13.6	22.4
<b>Total</b>	<b>2,783,726</b>	<b>100</b>	<b>2,896,016</b>	<b>100</b>	<b>4.0</b>

Figure 2. Distribution of the Asian population in Chicago (U.S. Census Bureau 2000).



\*Other includes Bangladeshi, Cambodian, Hmong, Indonesian, Laotian, Malaysian, Pakistani, Sri Lanken, Taiwanese, Thai, Other Asian, and Other Asian, not specified.

Table 5. Distribution of the Chicago population by age and race/ethnicity (U.S. Census Bureau 2000).

Age	White		Black/African-American		Hispanic/Latino		Asian		American Indian and Alaska Native		Native Hawaiian and Other Pacific Islander	
	n	%	n	%	n	%	n	%	n	%	n	%
0-9	135,616	11.2	191,247	18.0	160,393	21.3	13,651	10.8	1,894	18.4	295	16.5
10-19	120,350	9.9	178,787	16.8	134,470	17.8	13,757	10.9	1,754	17.0	268	15.0
20-29	236,206	19.4	148,401	13.9	159,554	21.2	29,787	23.6	2,002	19.5	442	24.7
30-39	225,048	18.5	150,703	14.2	125,445	16.6	23,295	18.5	1,707	16.6	303	16.9
40-49	166,745	13.7	145,341	13.6	83,891	11.1	16,623	13.2	1,360	13.2	210	11.7
50-59	123,779	10.2	101,995	9.6	47,758	6.3	12,613	10.0	825	8.0	128	7.2
60-69	84,514	7.0	75,079	7.0	25,643	3.4	8,539	6.8	427	4.1	79	4.4
70 +	123,057	10.1	73,456	6.9	16,490	2.2	7,709	6.1	321	3.1	63	3.5

Table 6. Distribution of the Asian population by age, gender, and each ethnic group alone<sup>1</sup> (U.S. Census Bureau 2000).

Age	Asian Indian	Chinese	Filipino	Japanese	Korean	Vietnamese	Other <sup>2</sup>	Total
<i>Both genders</i>								
0-9	2,967	3,440	2,638	196	876	1,201	2,333	13,651
10-19	2,839	3,210	3,127	212	901	1,160	2,308	13,757
20-29	7,829	6,204	5,604	983	3,441	1,957	3,769	29,787
30-39	4,845	6,234	4,665	936	2,129	1,510	2,976	23,295
40-49	2,903	4,616	4,133	791	1,069	1,028	2,083	16,623
50-59	2,039	2,862	4,109	516	1,053	784	1,250	12,613
60-69	1,087	2,446	2,500	474	1,017	386	629	8,539
70 +	495	2,268	1,647	1,359	1,409	195	336	7,709
Total	25,004	31,280	28,423	5,467	11,895	8,221	15,684	125,974
<i>Male</i>								
0-9	1,524	1,703	1,308	91	446	627	1,158	6,857
10-19	1,476	1,630	1,605	99	440	574	1,157	6,981
20-29	4,282	3,020	2,622	416	1,547	967	1,894	14,748
30-39	2,869	3,034	2,165	442	1,033	875	1,676	12,094
40-49	1,695	2,371	1,723	392	447	493	1,158	8,279
50-59	1,152	1,354	1,568	248	418	385	663	5,788
60-69	606	1,154	1,023	176	416	188	297	3,860
70 +	238	1,017	589	614	448	97	138	3,141
Total	13,842	15,283	12,603	2,478	5,195	4,206	8,141	61,748
<i>Female</i>								
0-9	1,443	1,737	1,330	105	430	574	1,175	6,794
10-19	1,363	1,580	1,522	113	461	586	1,151	6,776
20-29	3,547	3,184	2,982	567	1,894	990	1,875	15,039
30-39	1,976	3,200	2,500	494	1,096	635	1,300	11,201
40-49	1,208	2,245	2,410	399	622	535	925	8,344
50-59	887	1,508	2,541	268	635	399	587	6,825
60-69	481	1,292	1,477	298	601	198	332	4,679
70 +	257	1,251	1,058	745	961	98	198	4,568
Total	11,162	15,997	15,820	2,989	6,700	4,015	7,543	64,226

<sup>1</sup> Please see Appendix for similar tables with Asian ethnic groups in combination, and alone and in combination

<sup>2</sup> Other includes Bangladeshi, Cambodian, Hmong, Indonesian, Laotian, Malaysian, Pakistani, Sri Lankan, Taiwanese, Thai, and Other Asian, not specified.

Table 7. Socioeconomic status of racial/ethnic groups in Chicago (U.S. Census Bureau 2000).

	White		Black/African-American		Asian		Hispanic/Latino		Total <sup>1</sup>	
<b>Household Income Level (dollars)</b>	Number	%	Number	%	Number	%	Number	%	Number	%
# 34,999	193,821	36.8	208,113	57.5	19,753	43.2	90,696	47.4	513,992	45.5
35,000 - 49,999	85,021	16.2	53,901	14.9	7,571	16.6	36,681	19.2	183,769	16.3
50,000 - 74,999	101,708	19.3	54,254	15.0	8,609	18.8	35,993	18.8	201,186	17.8
75,000 - 124,999	90,907	17.3	34,625	9.6	6,797	14.9	21,989	11.5	154,844	13.7
\$125,000	54,960	10.4	10,733	3.0	3,004	6.6	5,998	3.1	74,798	6.6
<b>Education</b>										
Less than 9 <sup>th</sup> grade	91,032	10.6	43,622	7.1	10,061	11.5	130,457	34.3	276,202	14.1
Some high school	95,377	11.1	137,389	22.2	7,657	8.8	72,741	19.1	314,340	16.1
High school/GED	189,621	22.0	16,211	26.2	12,453	14.2	83,576	22.0	449,063	23.0
Some college/ Associates degree	173,440	20.1	191,747	31.0	15,111	17.3	61,419	16.1	443,331	22.7
Bachelors degree	185,822	21.5	53,611	8.7	26,466	30.3	21,505	5.7	287,921	14.7
Masters/ Professional degree	127,393	14.8	29,753	4.8	15,721	18.0	10,868	2.9	184,097	9.4

<sup>1</sup>Total includes White, Black/African-American, Asian, Hispanic/Latino, and American Indian and Alaska Native, and Native Hawaiian and Other Pacific Islander (not included separately in table).

# Health Profile

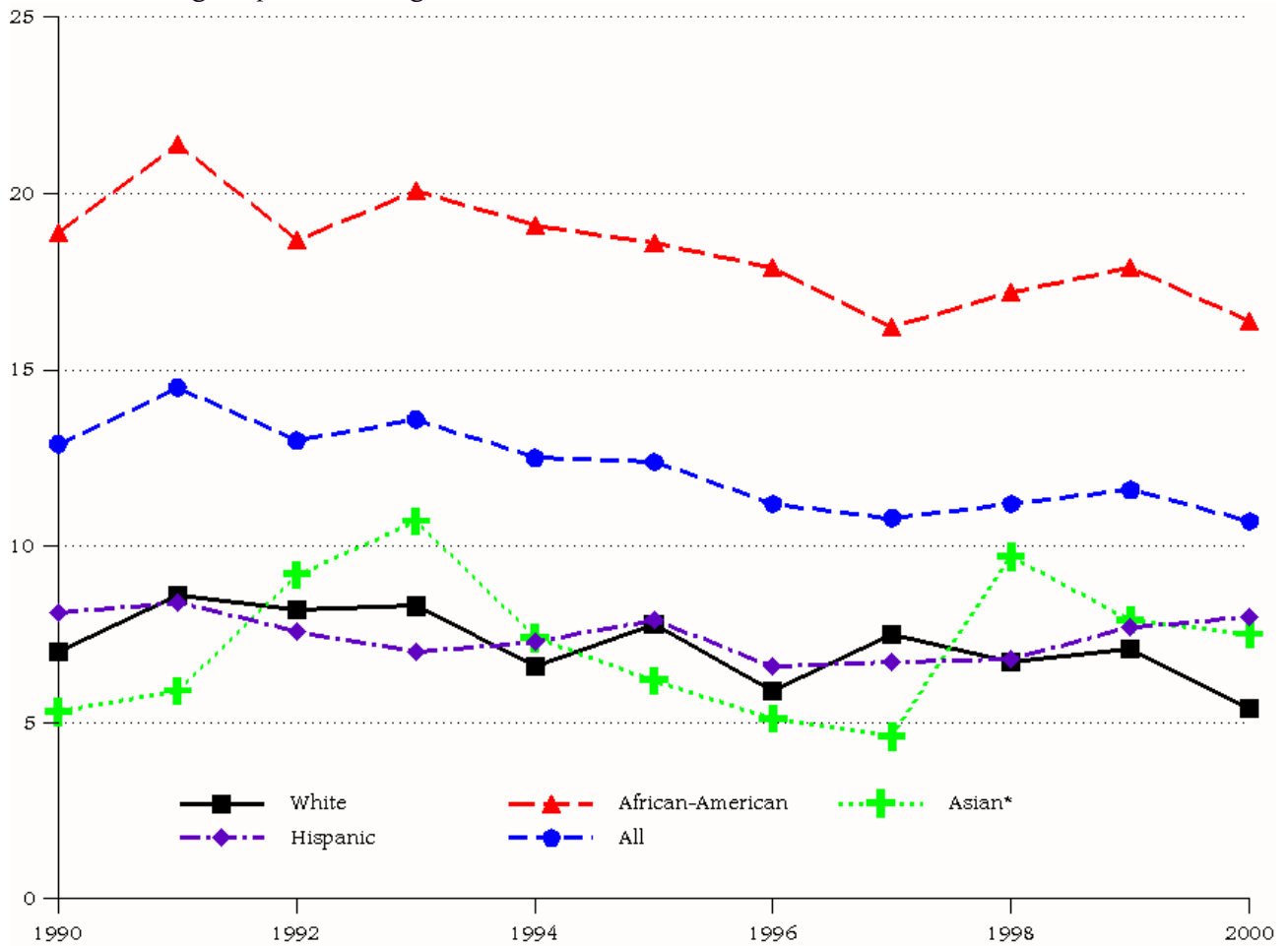
Table 8. Birth rate among different racial/ethnic groups in Chicago (1990, 2000).

Race/Ethnicity	1990		2000	
	No. of Births	Rate	No. of Births	Rate
White	13,927	11.3	10,681	8.8
Black/African-American	28,742	26.4	19,436	18.2
Hispanic/Latino	15,495	28.4	18,456	24.5
Asian	1,897	18.4	2,122	16.8
Asian Indian	NA <sup>1</sup>	--	468	18.7
Chinese (except Taiwanese)	176	7.9	390	12.5
Korean	NA	--	157	13.2
Japanese	32	4.8	55	10.1
Filipino	132	4.8	404	14.2
Vietnamese	NA	--	185	22.5
Other	1,557	33.5	463	29.5
Native Hawaiian & Other Pacific Islander	NA	--	5	NC <sup>2</sup>
American Indian & Alaska Native	85	12.0	53	5.2
<b>Total</b>	<b>60,152</b>	<b>21.6</b>	<b>50,885</b>	<b>17.6</b>

<sup>1</sup> NA = Not Available.

<sup>2</sup> NC = Not Calculated, number of births is too small for stable rate calculation.

Figure 3. Trend in infant mortality rate (per 1,000 live births) among different racial/ethnic groups in Chicago.



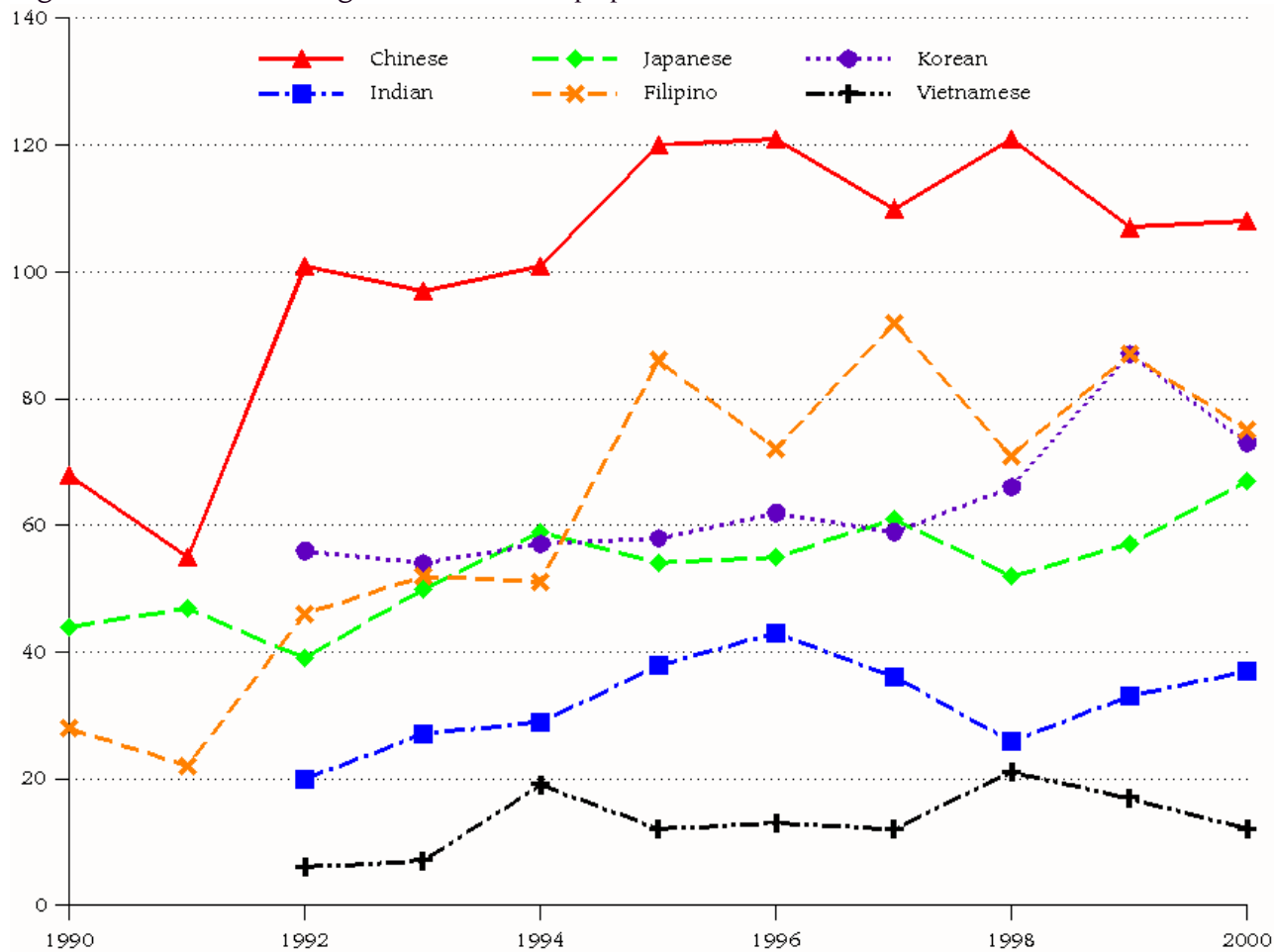
\*Infant mortality rates among Asians were based on annual deaths of less than 20 except 1993. These rates are considered to be unstable, and should be used with caution.

Table 9. Age-adjusted all-cause and cause-specific mortality rates among different racial/ethnic population groups in Chicago (1990, 2000).

Cause of Death	Mortality Rate (per 100,000)									
	White		African-American		Asian & Pacific Islander		Hispanic		All <sup>1</sup>	
	1990	2000	1990	2000	1990	2000	1990	2000	1990	2000
All	979.6	935.2	1389.6	1208.8	416.3	466.2	530.0	578.0	1127.3	971.6
Cardio-vascular Disease	366.9	308.7	417.3	354.7	157.8	133.9	153.7	155.5	382.1	300.1
Cerebro-vascular Disease	54.3	55.7	75.0	69.9	32.2	41.4	20.7	28.2	61.3	58.4
Cancer	226.2	223.2	314.2	283.8	95.1	111.0	98.3	116.5	251.6	225.1
Diabetes	20.4	23.2	38.4	35.2	24.5	18.8	21.2	45.4	27.4	29.0
Accidents	30.6	36.7	53.3	52.4	12.3	12.7	24.5	27.5	40.3	39.4
Lower Respiratory Disease	30.2	38.8	35.8	32.8	13.5	13.7	14.4	15.4	31.8	33.5
Septicemia	10.8	19.7	19.5	42.4	9.9	9.4	6.8	13.9	13.7	26.6
Homicide	6.1	4.9	57.1	42.9	3.7	1.4	21.4	12.3	30.3	20.8
Pneumonia & Influenza	36.9	27.0	59.5	29.1	3.7	21.2	23.2	15.0	44.0	26.3

<sup>1</sup>All includes White, African-American, Asian & Pacific Islander, Hispanic and Other populations.

Figure 4. Deaths among different Asian populations over time.



## References

1. Day, Jennifer Cheeseman. *Population Projections of the United States by Age, Sex, Race and Hispanic Origin: 1995 to 2050*, U.S. Bureau of the Census, Current Population Reports, P25-1130, U.S. Government Printing Office, Washington, 1996.
2. Young, J.J., N. Gu. *Demographic and Socioeconomic Characteristics of Elderly Asian and Pacific Island Americans*, Seattle, WA: National Asian Pacific Center on Aging, 1995.
3. Grieco, Elizabeth M., Cassidy, Rachel C. *Overview of Race and Hispanic Origin*, Census 2000 Brief, U.S. Census Bureau, U.S. Department of Commerce, Economics and Statistics Administration, March 2001.
4. Anderson RN, Rosenberg HM. Age Standardization of Death Rates: Implementation of the Year 2000 Standard. National vital statistics reports; vol 47 no 3. Hyattsville, Maryland: National Center for Health Statistics. 1998.
5. Shalala, Donna E. "HHS Policy for Changing the Population Standard for Age Adjusting Death Rates." Memorandum to Heads of Operating Divisions and Heads of Staff Divisions, Department of Health & Human Services, Washington DC, 26 August 1998.
6. Anderson RN, Miniño AM, Hoyert DL, Rosenberg HM. Comparability of Cause of Death between ICD-9 and ICD-10: Preliminary Estimates. National vital statistics reports; vol 49 no 2. Hyattsville, Maryland: National Center for Health Statistics. 2001.

# Appendix

Table 10. Distribution of the Asian population by Chicago Community Area (U.S. Census Bureau 2000).

CA No.	Community Area	Asian Indian	Chinese except Taiwanese	Filipino	Japanese	Korean	Vietnamese	Other <sup>1</sup>	Total	% of Asian Pop.
1	Rogers Park	1,388	617	521	150	216	186	888	3,966	3.2
2	West Ridge	6,110	1,479	2,371	326	1,361	1,098	3,270	16,015	12.9
3	Uptown	991	1,041	1,137	459	917	2,184	1,267	7,996	6.5
4	Lincoln Square	718	452	1,938	251	1,147	485	918	5,909	4.8
5	North Center	124	134	652	167	115	35	105	1,332	1.1
6	Lake View	1,075	786	1,194	621	770	155	479	5,080	4.1
7	Lincoln Park	616	403	356	310	376	40	201	2,302	1.9
8	Near North Side	1,214	961	572	545	692	63	361	4,408	3.6
9	Edison Park	33	25	89	13	25	2	8	195	0.2
10	Norwood Park	270	172	541	49	77	21	79	1,209	1.0
11	Jefferson Park	173	84	604	91	96	104	96	1,248	1.0
12	Forest Glen	175	195	568	113	221	188	112	1,572	1.3
13	North Park	1,061	325	1,097	116	1,021	310	438	4,368	3.5
14	Albany Park	2,232	420	2,805	179	1,382	1,740	1,312	10,070	8.1
15	Portage Park	287	130	1,555	81	131	88	181	2,453	2.0
16	Irving Park	718	189	2,490	122	229	175	440	4,363	3.5
17	Dunning	141	52	963	44	52	17	63	1,332	1.1
18	Montclare	55	15	216	5	5	11	27	334	0.3
19	Belmont Cragin	221	69	1,474	18	21	104	100	2,007	1.6
20	Hermosa	30	18	220	9	11	30	24	342	0.3
21	Avondale	109	70	624	63	41	16	56	979	0.8
22	Logan Square	204	127	413	75	157	29	134	1,139	0.9
23	Humboldt Park	38	29	162	23	13	8	11	284	0.2
24	West Town	244	203	581	104	189	118	105	1,544	1.2
25	Austin	103	122	356	15	13	29	20	658	0.5
26	West Garfield Park	13	6	0	1	0	0	0	20	< 0.1

CA No.	Community Area	Asian Indian	Chinese except Taiwanese	Filipino	Japanese	Korean	Vietnamese	Other <sup>1</sup>	Total	% of Asian Pop.
27	East Garfield Park	7	2	4	0	4	3	5	25	< 0.1
28	Near West Side	1,968	1,233	684	110	503	76	311	4,885	3.9
29	North Lawndale	17	1	17	3	9	5	16	68	0.1
30	South Lawndale	57	32	27	1	8	1	47	173	0.1
31	Lower West Side	32	26	52	15	16	7	26	174	0.1
32	The Loop	296	549	193	156	271	12	129	1,606	1.3
33	Near South Side	99	230	82	10	36	7	39	503	0.4
34	Armour Square	65	7,137	28	5	18	9	34	7,296	5.9
35	Douglas	551	245	105	54	230	25	171	1,381	1.1
36	Oakland	1	5	1	0	0	0	0	7	< 0.1
37	Fuller Park	0	0	0	0	6	0	0	6	< 0.1
38	Grand Boulevard	1	0	4	2	5	0	10	22	< 0.1
39	Kenwood	218	191	66	93	154	11	47	780	0.6
40	Washington Park	0	2	0	0	0	3	0	5	< 0.1
41	Hyde Park	708	1,290	145	264	543	73	309	3,332	2.7
42	Woodlawn	42	102	7	15	17	1	20	204	0.2
43	South Shore	39	10	6	11	5	3	12	86	0.1
44	Chatham	6	9	3	2	0	2	4	26	< 0.1
45	Avalon Park	5	1	8	2	0	3	1	20	< 0.1
46	South Chicago	12	2	10	3	2	6	20	55	< 0.1
47	Burnside	0	0	1	6	0	0	0	7	< 0.1
48	Calumet Heights	1	0	27	6	0	0	2	36	< 0.1
49	Roseland	5	2	10	8	3	0	3	31	< 0.1
50	Pullman	0	2	3	2	1	4	9	21	< 0.1
51	South Deering	5	4	3	2	0	1	5	20	< 0.1
52	East Side	3	2	32	1	7	6	17	68	0.1
53	West Pullman	7	0	3	0	3	0	7	20	< 0.1
54	Riverdale	1	4	2	0	0	0	0	7	< 0.1
55	Hegewisch	4	1	4	12	8	1	9	39	< 0.1
56	Garfield Ridge	51	35	203	7	10	8	28	342	0.3

CA No.	Community Area	Asian Indian	Chinese except Taiwanese	Filipino	Japanese	Korean	Vietnamese	Other <sup>1</sup>	Total	% of Asian Pop.
57	Archer Heights	16	22	7	0	0	5	3	53	< 0.1
58	Brighton Park	29	977	230	5	15	23	30	1,309	1.1
59	McKinley Park	18	1,130	36	11	4	7	19	1,225	1.0
60	Bridgeport	51	8,265	226	31	41	65	93	8,772	7.1
61	New City	30	63	48	4	13	4	13	175	0.1
62	West Elsdon	1	54	48	2	4	5	10	124	0.1
63	Gage Park	34	41	78	8	6	6	28	201	0.2
64	Clearing	31	23	80	7	3	2	15	161	0.1
65	West Lawn	43	65	135	5	10	10	15	283	0.2
66	Chicago Lawn	76	24	260	10	12	6	22	410	0.3
67	West Englewood	10	0	6	1	5	2	6	30	< 0.1
68	Englewood	1	6	12	0	0	0	8	27	< 0.1
69	Greater Grand Crossing	11	2	8	3	0	0	4	28	< 0.1
70	Ashburn	72	92	145	8	14	13	70	414	0.3
71	Auburn Gresham	16	2	2	7	3	3	15	48	< 0.1
72	Beverly	23	18	45	12	5	11	7	121	0.1
73	Washington Heights	2	1	1	2	2	0	2	10	< 0.1
74	Mount Greenwood	16	11	24	4	3	1	2	61	< 0.1
75	Morgan Park	9	6	33	5	7	1	21	82	0.1
76	O'Hare	462	64	157	31	83	5	65	867	0.7
77	Edgewater	1,499	1,172	1,606	569	524	549	1,141	7,060	5.7
	Chicago	24,994	31,279	28,416	5,465	11,891	8,221	13,565	123,831	100

<sup>1</sup>Other includes Bangladeshi, Cambodian, Hmong, Indonesian, Laotian, Malaysian, Pakistani, Sri Lanken, Taiwanese, Thai, Other Asian, and Other Asian, not specified.

Table 11. Distribution of Asian population by age, gender, and each ethnic group in combination with any other racial/ethnic group (U.S. Census Bureau 2000).

Age	Asian Indian	Chinese	Filipino	Japanese	Korean	Vietnamese	Other <sup>1</sup>	Total
<i>Both genders</i>								
0-9	491	534	1,021	381	233	130	347	3,137
10-19	381	393	638	300	147	89	315	2,263
20-29	621	556	730	339	277	193	346	3,062
30-39	510	367	478	281	150	129	423	2,338
40-49	389	255	326	185	58	75	274	1,562
50-59	233	129	300	62	32	41	151	948
60-69	146	91	207	25	40	25	102	636
70 +	114	96	143	74	35	22	113	597
Total	2,885	2,421	3,843	1,647	972	704	2,071	14,543
<i>Male</i>								
0-9	262	275	540	216	133	68	167	1,661
10-19	202	199	317	155	70	39	197	1,179
20-29	317	250	326	158	126	114	251	1,542
30-39	274	177	231	124	67	66	312	1,251
40-49	210	124	149	95	21	32	211	842
50-59	140	54	126	29	12	22	81	464
60-69	73	41	87	8	20	10	28	297
70 +	56	39	56	37	18	10	26	242
Total	1,534	1,159	1,832	822	467	361	1,303	7,478
<i>Female</i>								
0-9	229	259	481	165	100	62	180	1,476
10-19	179	194	321	145	77	50	118	1,084
20-29	304	306	404	181	151	79	95	1,520
30-39	236	190	247	157	83	63	111	1,087
40-49	179	131	177	90	37	43	63	720
50-59	93	75	174	33	20	19	70	484
60-69	73	50	120	17	20	15	44	339
70 +	58	57	87	37	17	12	87	355
Total	1,351	1,262	2,011	825	505	343	768	7,065

<sup>1</sup>Other includes Bangladeshi, Cambodian, Hmong, Indonesian, Laotian, Malaysian, Pakistani, Sri Lanken, Taiwanese, Thai, and Other Asian, not specified.

Table 12. Distribution of Asian population by age, gender, and each ethnic group alone or in combination with any other racial/ethnic group (U.S. Census Bureau 2000).

Age	Asian Indian	Chinese	Filipino	Japanese	Korean	Vietnamese	Other <sup>1</sup>	Total
<i>Both genders</i>								
0-9	3,458	3,974	3,659	577	1,109	1,331	2,680	16,788
10-19	3,220	3,603	3,765	512	1,048	1,249	2,623	16,020
20-29	8,450	6,760	6,334	1,322	3,718	2,150	4,115	32,849
30-39	5,355	6,601	5,143	1,217	2,279	1,639	3,399	25,633
40-49	3,292	4,871	4,459	976	1,127	1,103	2,357	18,185
50-59	2,272	2,991	4,409	578	1,085	825	1,401	13,561
60-69	1,233	2,537	2,707	499	1,057	411	731	9,175
70 +	609	2,364	1,790	1,433	1,444	217	449	8,306
Total	27,889	33,701	32,266	7,114	12,867	8,925	17,755	140,517
<i>Male</i>								
0-9	1,786	1,978	1,848	307	579	695	1,325	8,518
10-19	1,678	1,829	1,922	254	510	613	1,354	8,160
20-29	4,599	3,270	2,948	574	1,673	1,081	2,145	16,290
30-39	3,143	3,211	2,396	566	1,100	941	1,988	13,345
40-49	1,905	2,495	1,872	487	468	525	1,369	9,121
50-59	1,292	1,408	1,694	277	430	407	744	6,252
60-69	679	1,195	1,110	184	436	198	355	4,157
70 +	294	1,056	645	651	466	107	164	3,383
Total	15,376	16,442	14,435	330	5,662	4,567	9,444	69,226
<i>Female</i>								
0-9	1,672	1,996	1,811	270	530	636	1,355	8,270
10-19	1,542	1,774	1,843	258	538	636	1,269	7,860
20-29	3,851	3,490	3,386	748	2,045	1,069	1,970	16,559
30-39	2,212	3,390	2,747	651	1,179	698	1,411	12,288
40-49	1,387	2,376	2,587	489	659	578	988	9,064
50-59	980	1,583	2,715	301	655	418	657	7,309
60-69	554	1,342	1,597	315	621	213	376	5,018
70 +	315	1,308	1,145	782	978	110	285	4,923
Total	12,513	17,259	17,831	3,814	7,205	4,358	8,311	71,291

<sup>1</sup>Other includes Bangladeshi, Cambodian, Hmong, Indonesian, Laotian, Malaysian, Pakistani, Sri Lanken, Taiwanese, Thai, and Other Asian, not specified.